

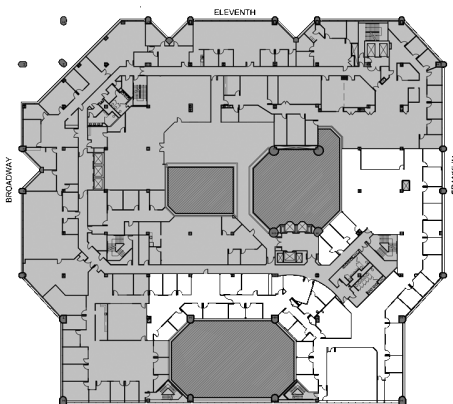
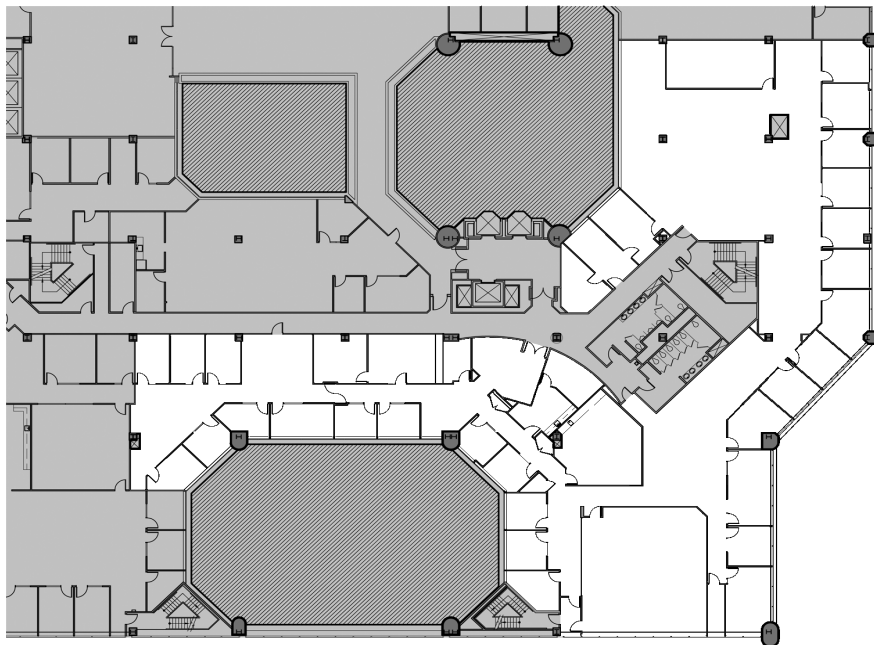
## available space - suite 300

AREA: 19,331

FLOOR: 3

AVAILABILITY: 9/1/2019

COMMENTS: 27 private offices. Large boardroom. Breakroom. Atrium and exterior views.



### LEASING INQUIRIES



**John Dolby**  
510.267.6027  
john.dolby@cushwake.com  
CA License 00870630

**Dane Hooks**  
510-267-6025  
dane.hooks@cushwake.com  
CA License 01900402

[www.1000broadway.com](http://www.1000broadway.com)